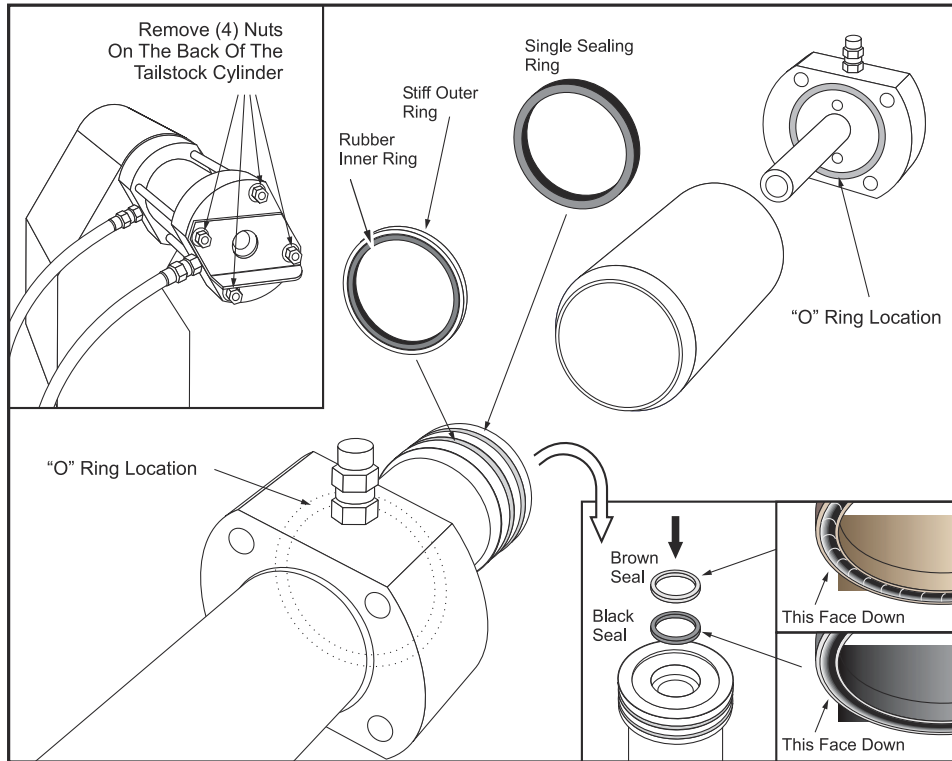




SL-10 - Hydraulic Tailstock - Seal - Replacement

SL-10 - Hydraulic Tailstock - Seal - Removal

1. Remove the 4 nuts on the back of the tailstock cylinder.
2. Remove the back of the cylinder and then the cylinder housing.
3. Remove the two seals from the end of the cylinder.
4. Remove the two seals from the end of the cylinder. One of the seals is inside the bore of the cylinder.



SL-10 - Hydraulic Tailstock - Seal - Installation

1. Install two seals to the end of the cylinder. Note the differences between the seals there is an apparent thickness difference.
2. Install the two seals to the end of the cylinder. Note the orientation of the seals. They must be installed facing the proper direction (See the following illustration).
3. Reinstall the cylinder in the housing, replace the back of the tailstock cylinder and secure with 4 nuts.