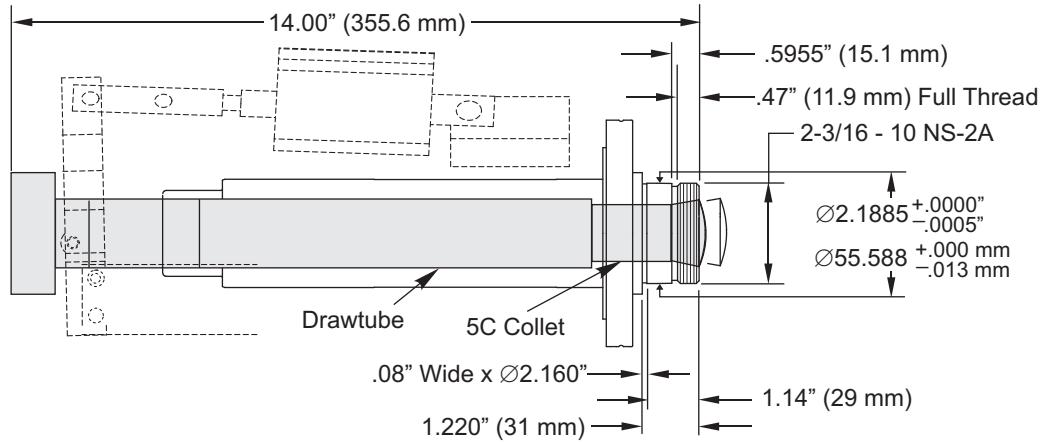
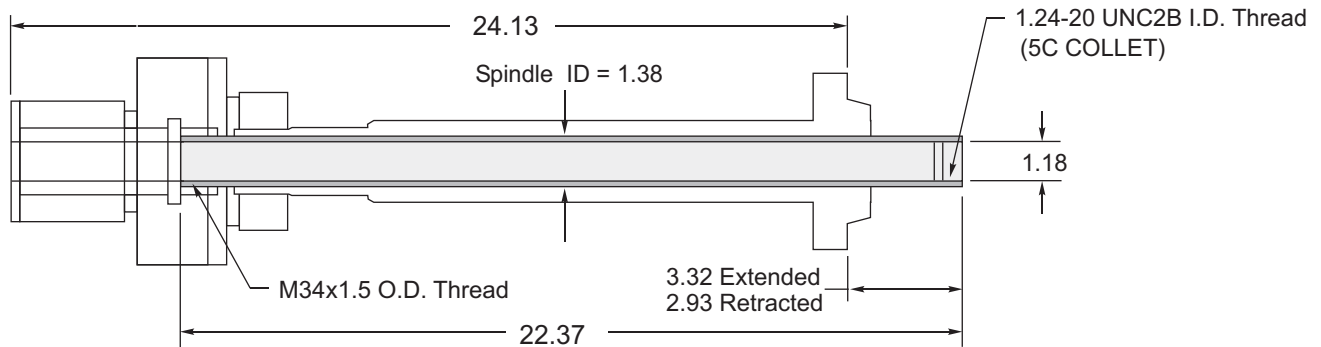


LATHE DRAWTUBE SPECIFICATIONS

OL-1

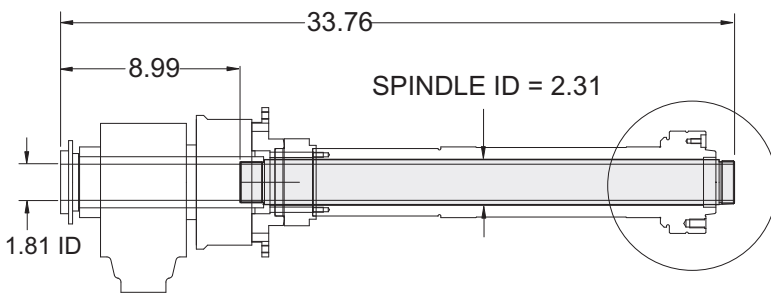


MINI-LATHE

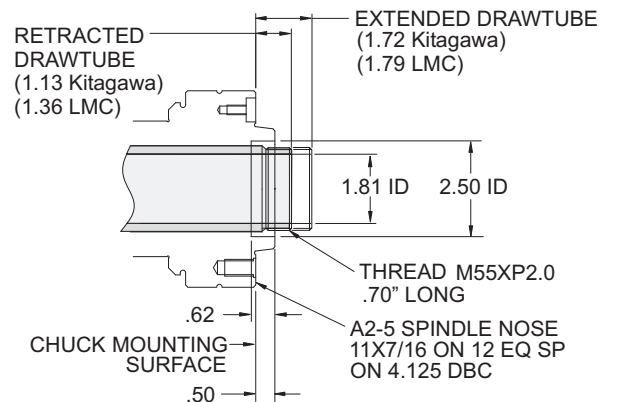


DRAWTUBE STROKE = .37

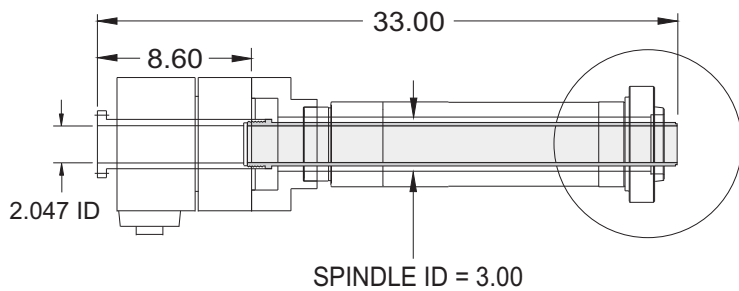
SL-10 MAIN SPINDLE



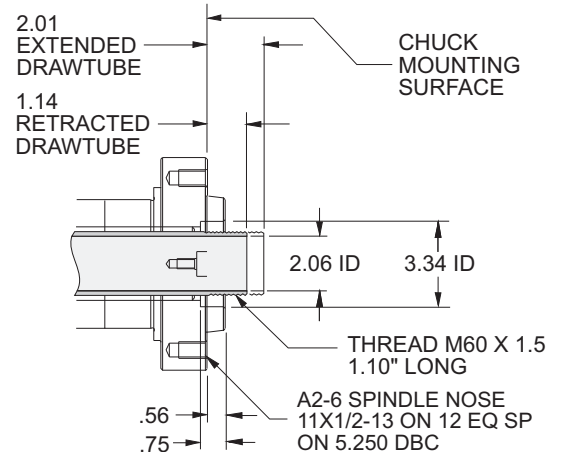
DRAWTUBE STROKE = .51



SL-10BB / SL-20 / TL-15 MAIN SPINDLE (Incl. SL-20, TL-15 5K Option)

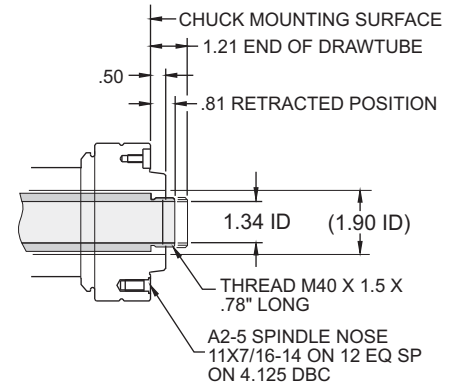
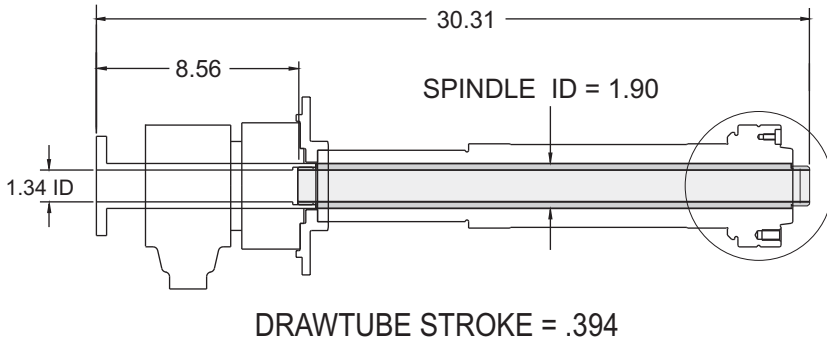


DRAWTUBE STROKE = .87

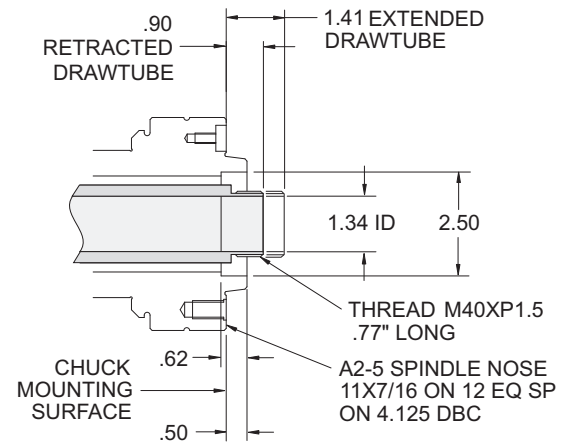
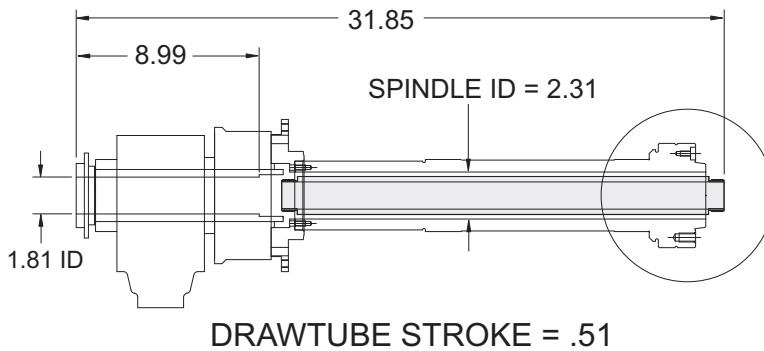


LATHE DRAWTUBE SPECIFICATIONS

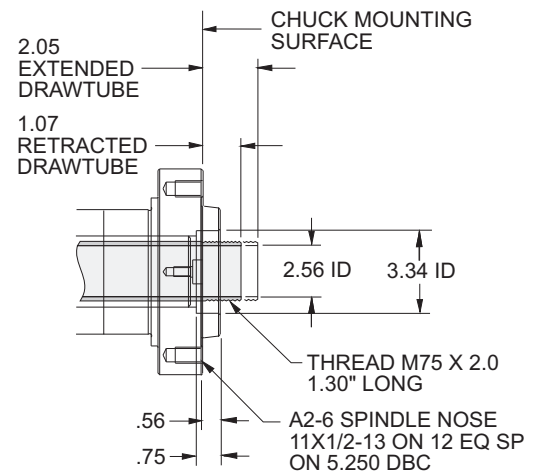
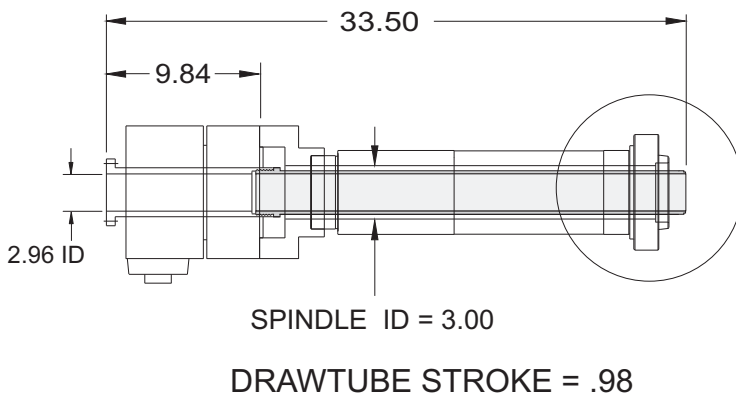
SL-20 7K SPINDLE (5" HYDRAULIC CLOSER) LMC PN ZKP100/34-10



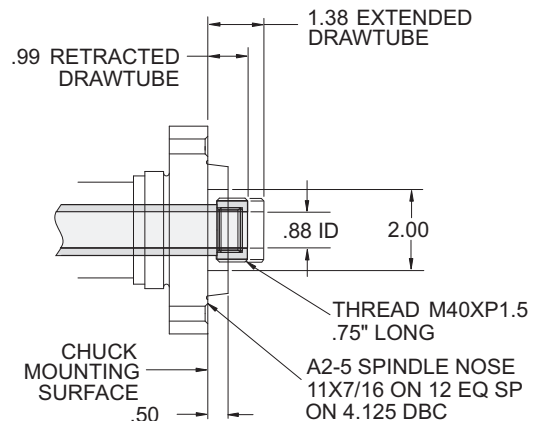
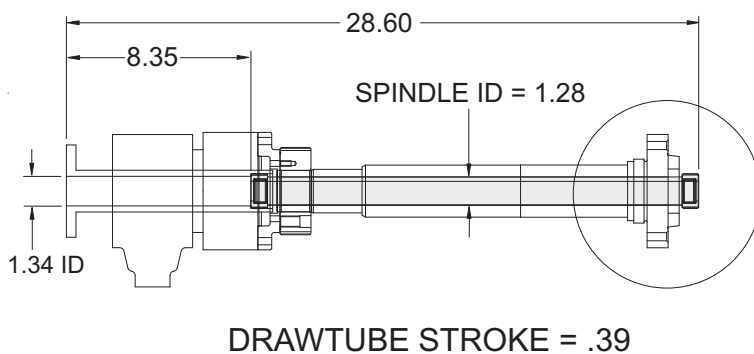
SL-20 7K SPINDLE (6" HYDRAULIC CLOSER) LMC PN ZKP125/46-13



SL-20 BB, TL-15 BB MAIN SPINDLE

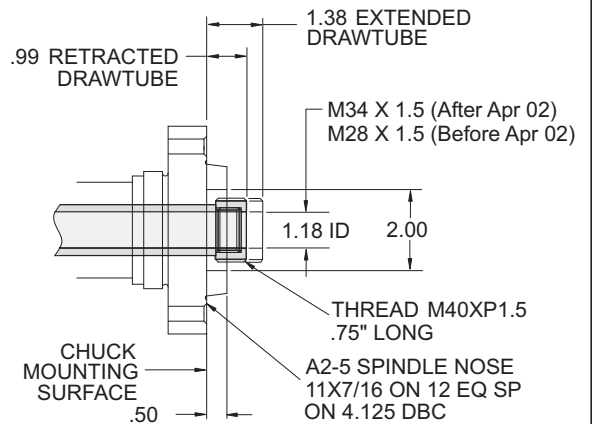
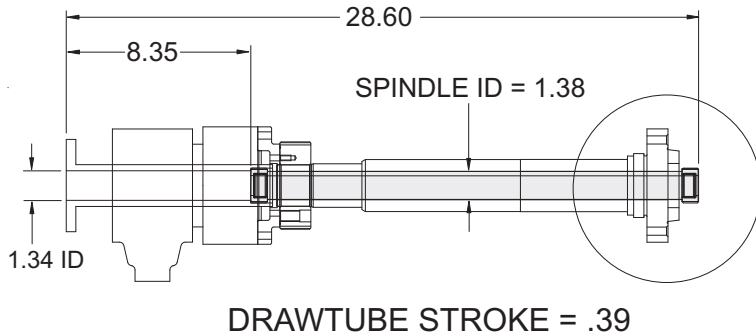


TL SERIES SUB-SPINDLE

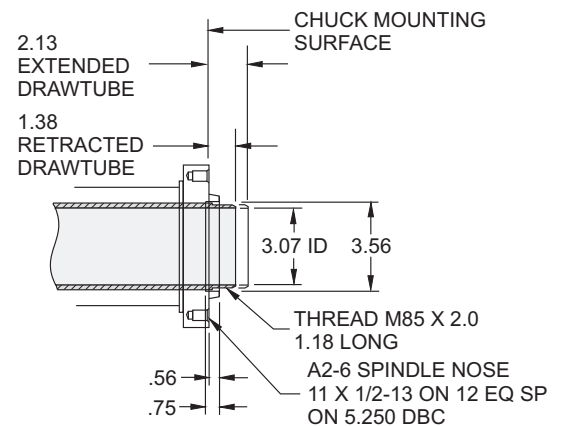
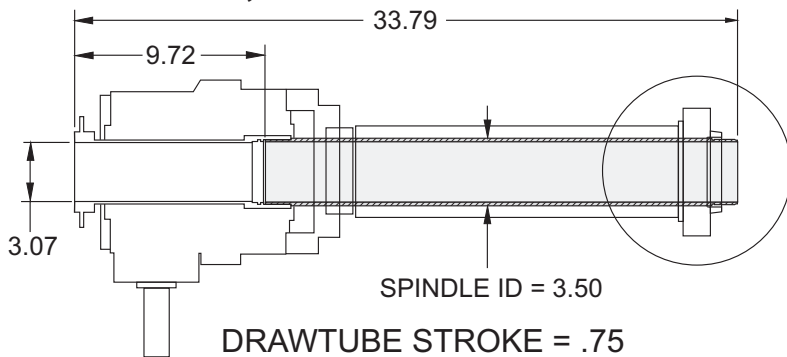


LATHE DRAWTUBE SPECIFICATIONS

TL SERIES SUB-SPINDLE (CURRENT PRODUCTION)

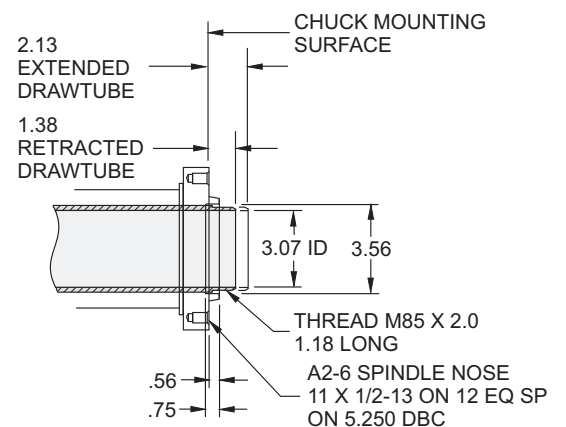
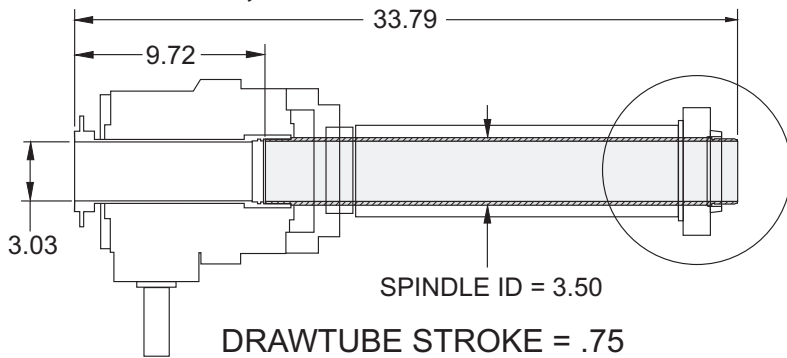


SL-30, TL-25 MAIN SPINDLE*



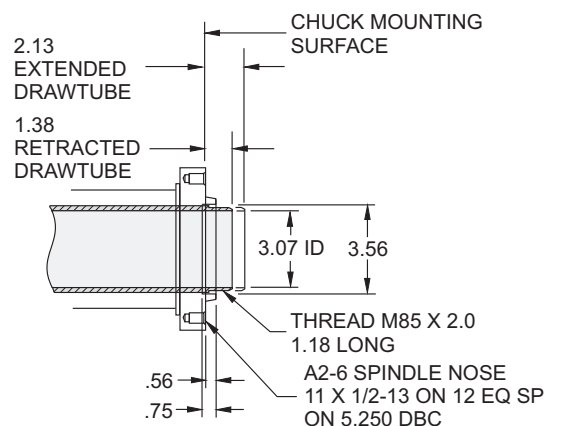
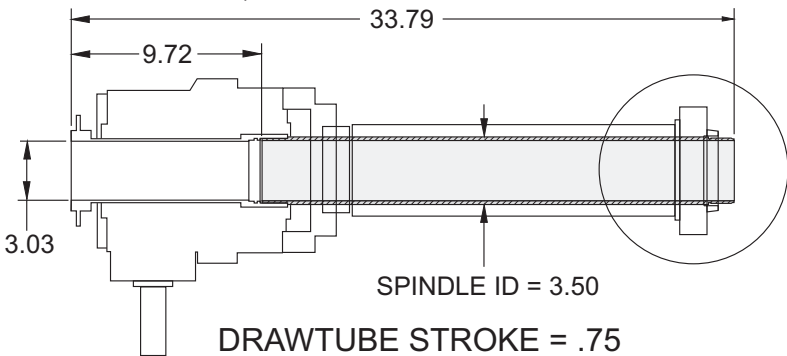
(Current Production)

SL-30, TL-25 MAIN SPINDLE*



*S/N 64804 and later

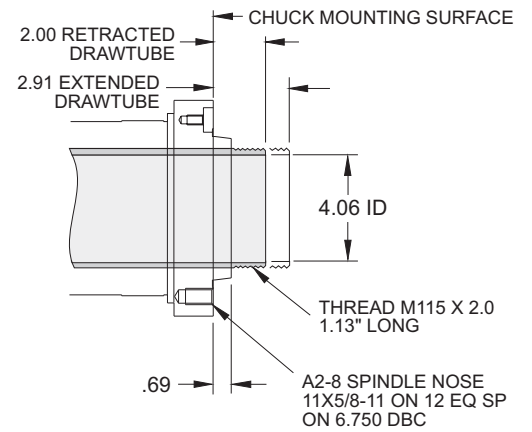
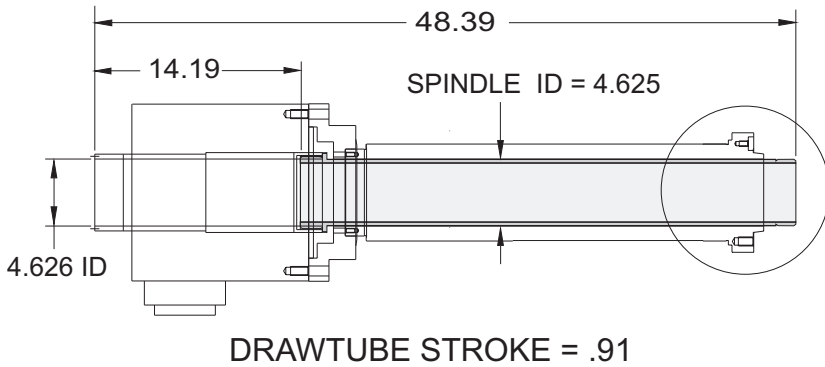
SL-30, TL-25 MAIN SPINDLE*



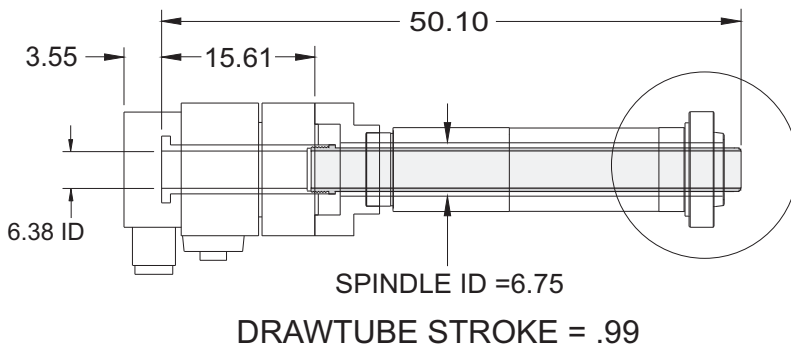
*S/N 64804 and later

LATHE DRAWTUBE SPECIFICATIONS

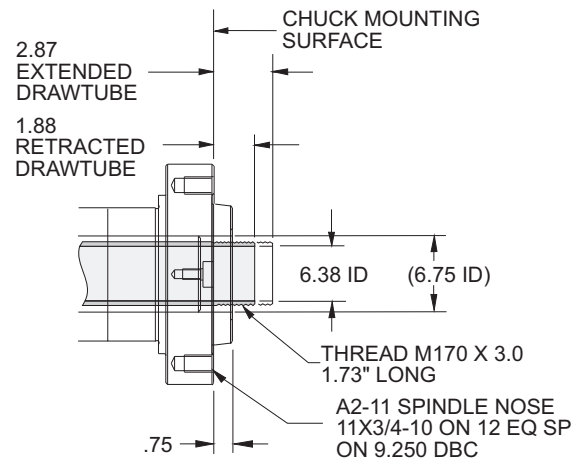
SL-40, SL-30 BB, SL-30 BF, TL-25 MAIN SPINDLE



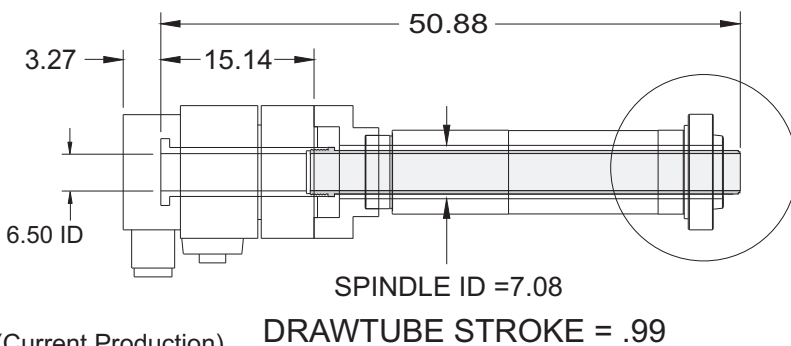
SL-40 BB MAIN SPINDLE *



*Prior to S/N 66930



SL-40 BB MAIN SPINDLE **



(Current Production)

* Chuck, Drawtube, Hydraulic Coser are Optional and Sold as Package.

**S/N 66930 and Later

