



HAAS AUTOMATION NEXT GENERATION CONTROL QUICK START GUIDE

Welcome to the Next Generation HAAS Control.

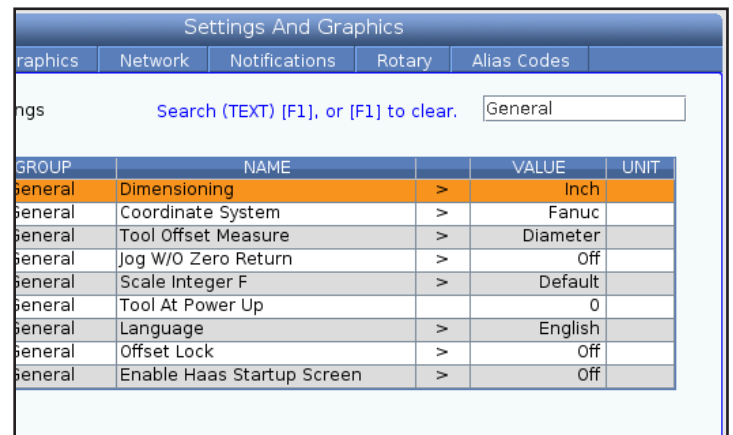
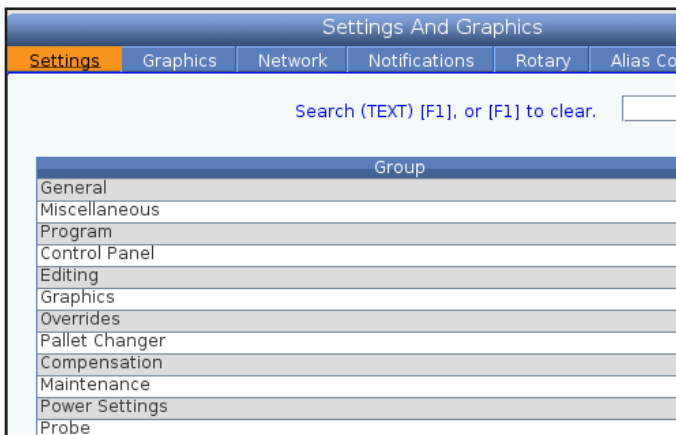
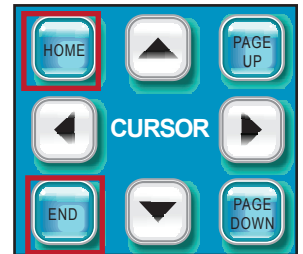
The new control features increased memory, improved motion control, and streamlined navigation. This document covers basic setup and operation; including how to navigate, load programs, set offsets, run programs, create, and edit programs.

Navigation

Navigation is consistent in the new control, and utilizes the arrow keys.

As an example, to navigate to the general settings page:

1. Press **SETTINGS**.
2. Use the **LEFT** and **RIGHT** cursor arrow keys to move between the menu options.
3. Highlight **Settings**, then press the **DOWN** arrow to enter the menu.
4. Press the **RIGHT** cursor arrow key to select **General**.
5. Use the **UP** and **DOWN** keys to scroll through the menu. The **HOME** key brings your cursor to the top of the page, and the **END** key brings your cursor to the bottom.
6. To navigate back up to the tabs, press the **UP** arrow.



New Key Functions

The **SEND** and **RECEIVE** keys are now the **FORWARD** and **BACK** keys, Two keys allow you to navigate through your page history.

In the offsets menu, press the **HANDLE SCROLL** key. This key allows you to use the handle jog wheel to scroll through your offsets without jogging the machine. Press the **HANDLE SCROLL** key again to resume the normal handle jog wheel function.



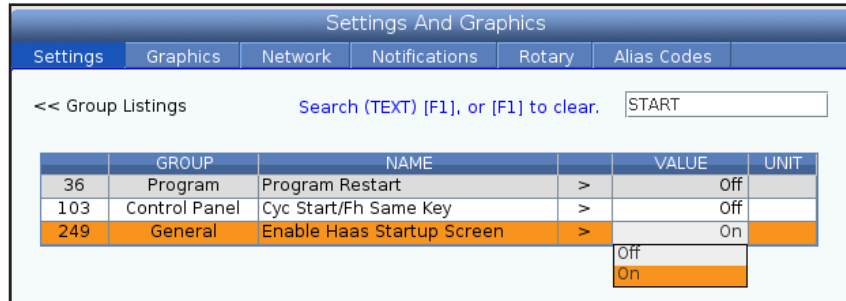


Search

To find a program, setting, parameter, etc. quickly, use the search feature.

As an example, to find setting 249 (enable Haas startup screen):

1. Type a search term or a portion of the search term. Press **F1**.
2. Press the **UP/DOWN** arrow keys to highlight the desired setting.
3. Use the **RIGHT** arrow key to show the available options
4. Press **F1** again to clear the search and return to the Setting list.



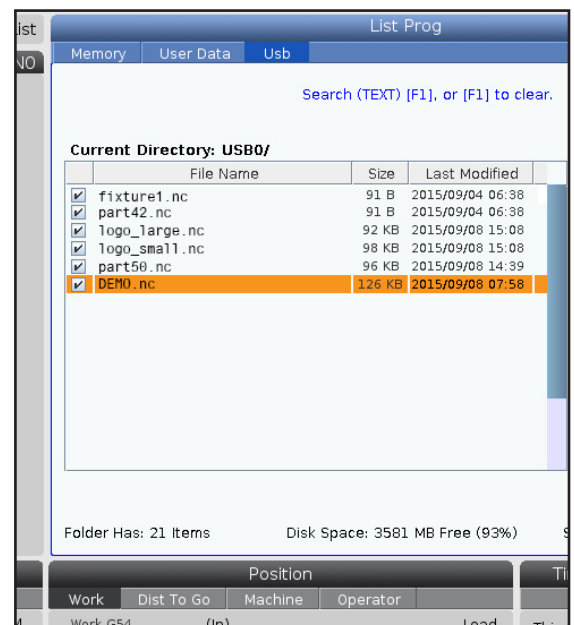
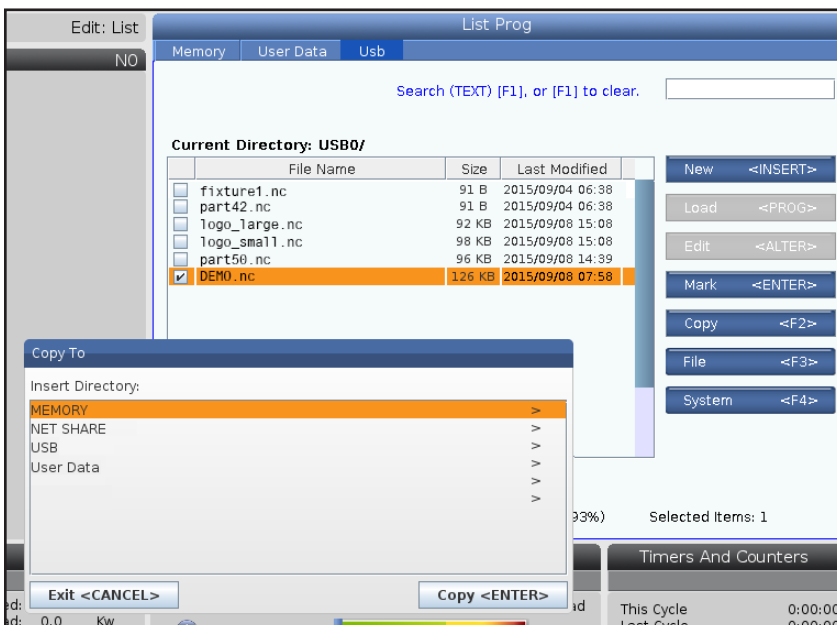
Loading Programs

The **List Program** page contains visual instructions to the right of the screen to simplify loading, copying, and creating programs. The process for copying/loading programs works for all sources or destinations.

As an example, to copy a program from a USB key to Memory:

1. Press **LIST PROGRAM** then select the **USB** tab with the arrow keys.
2. Find the file you want to copy. Highlight it with the cursor.
3. To copy more than one file at a time, press enter to individually select each file you want to copy.
4. Press **F2** to copy, then select Memory. Press **ENTER**.

NOTE: You can only copy .NC files to memory. You can copy any type of file in USER DATA.



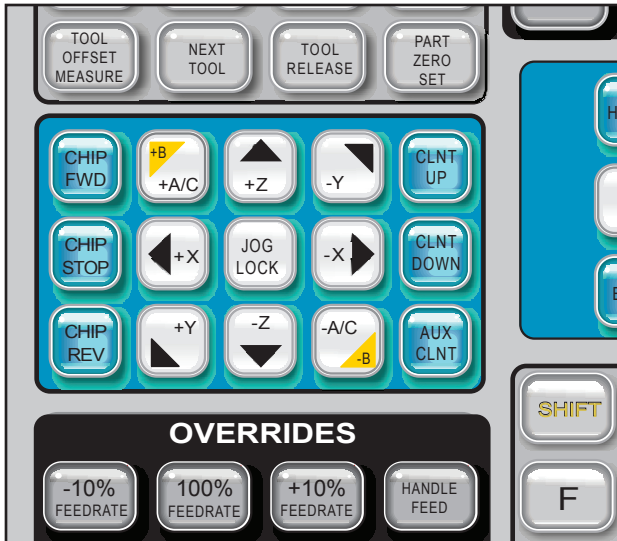


Jogging the Machine

To set offsets or to manually machine a part, you need to jog the machine.

As an example, to jog the X Axis:

1. Press **HANDLE JOG**
2. To select the X Axis, press **X+** or **X-**.
3. Use the jog handle to move the X Axis.



Setting Offsets

The Offsets tab contains all tool and work offset information.

Press **F4** to toggle between the work and tool offset tabs.

NOTE: The individual axis offsets can be set at different times.

The Tool Offsets tab contains spigot position, tool dimensions, pocket numbers, and more.

To manually set the length of tool 1:

1. Move the tool to the correct height with **HANDLE JOG**.
2. Press **OFFSET** and use the arrows to enter the tool offset menu.
3. Highlight the H (length) geometry column for tool 1.
4. Press **TOOL OFFSET MEASURE**.

The Work Offsets tab contains your work zero offsets for each axis.

To manually set a work offset:

1. Press **HANDLE JOG** and move the table to the correct position.
2. Press **OFFSET** or use the arrow keys to navigate to the work offset page.
3. Highlight the X Axis column for your work offset.
4. Press **PART ZERO SET** to set the X value. The control automatically moves the cursor to the next axis.

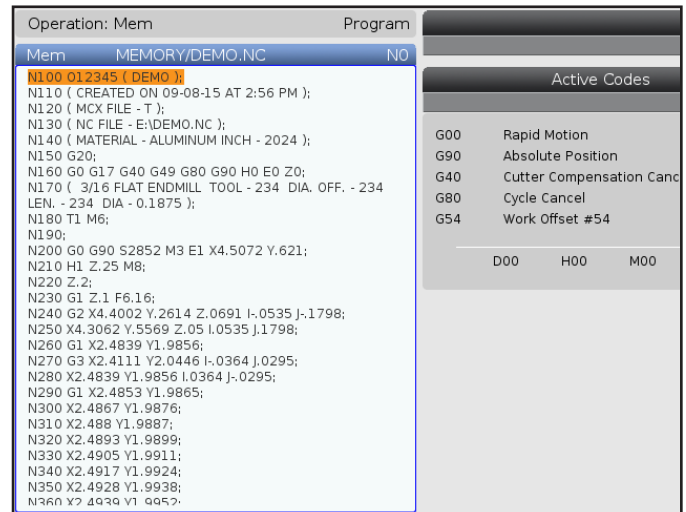
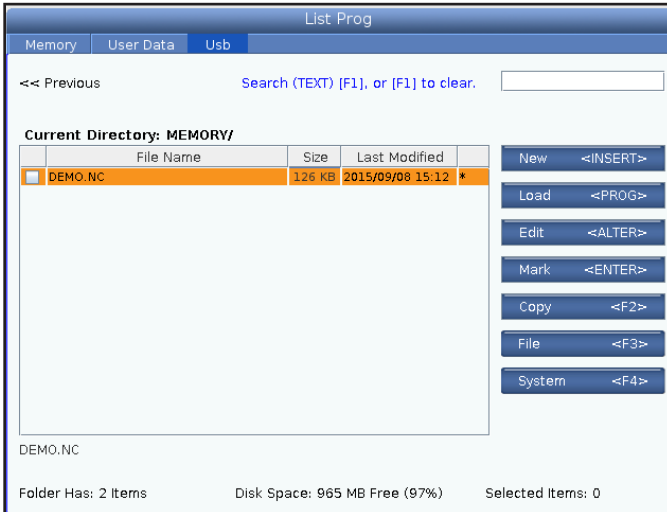


Running a Program

To run a program, you need to be in Memory mode. Press **MEMORY**, then press **CYCLE START**. You can select a different program at any time. The active program is automatically selected, and displays on the left side of the screen.

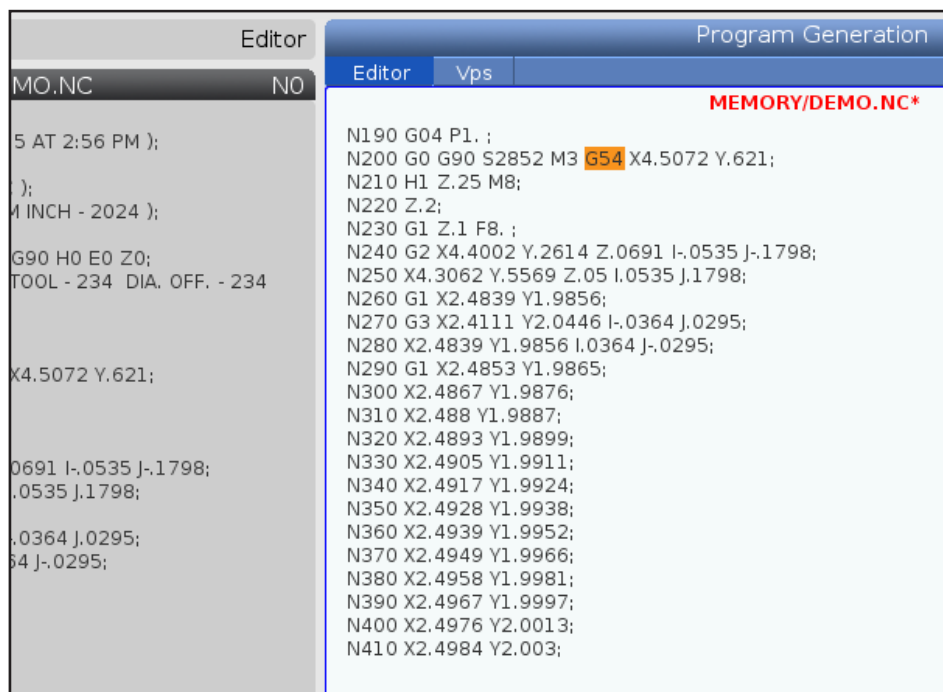
As an example, to change the active program:

1. Press **LIST PROGRAM**.
2. Move the cursor to the program you want to run, then press **SELECT PROGRAM**.
3. Press **MEMORY**, then press **CYCLE START**.



Editing a Program

To edit programs, press **EDIT**. **F1** opens the Advanced Editor for functions such as Copy, Undo/Redo, and Find/Replace. When you change a program, the file name turns red. When you finish the edits, press **MEMORY** to save the changes. The editor edits the active program; to edit a different program, select it from **LIST PROGRAM**.



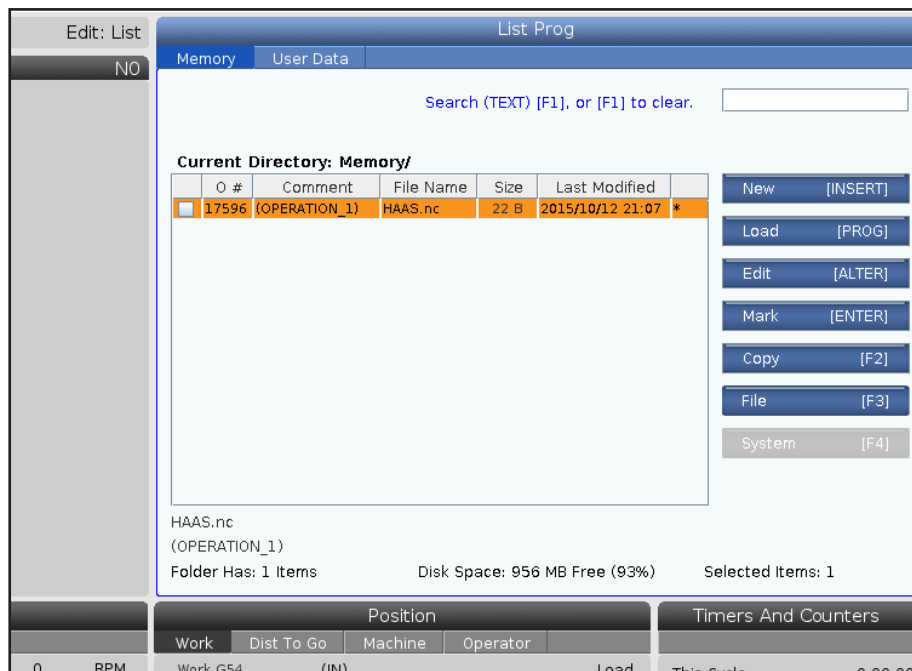
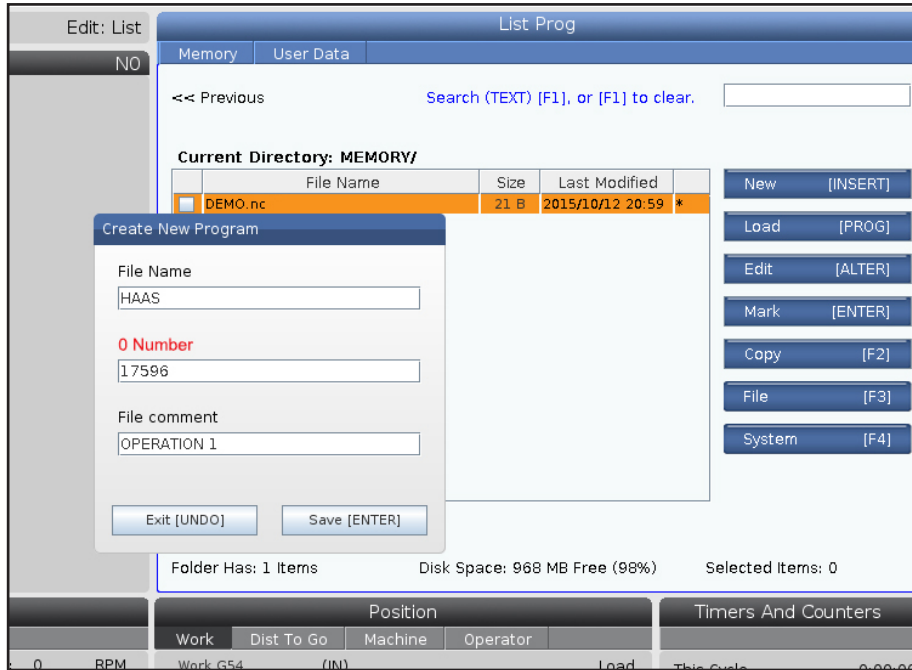


Creating a Program

To create a new program, press **LIST PROGRAM**, then press **INSERT**.

Each file requires an O-number, but also has an optional file name and comment. When you save the file to another location, the "File Name" is used. The comment is in parentheses next to the O-number.

For example: this program will show on the USB drive as Haas.nc, the program begins with O17956 (OPERATION_1).



Visit the Haas Automation Resource Center - diy.haascnc.com

Your Source for Routine Maintenance, "How To", Manuals & Documentation, Repairs & Service and Drawings & Diagrams.